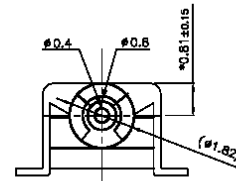
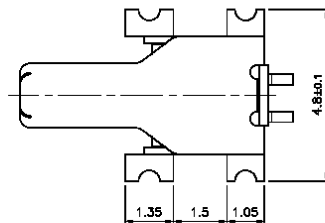


Part Number: MHCH196

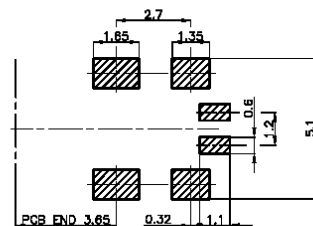
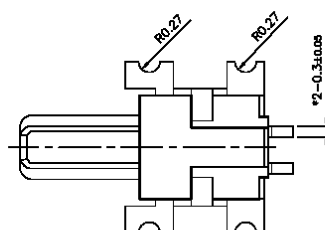
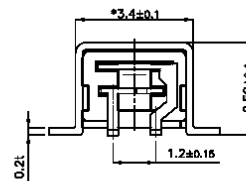
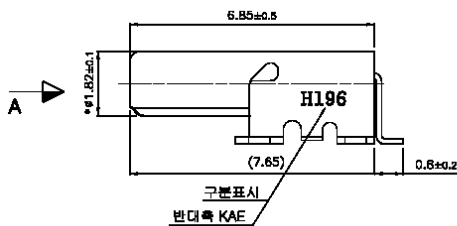
RF Switch Right Angle SMT Mounting

- Small and light weight
- 2.59 mm height
- Right angle insert type
- On board mounting type

- 1. Material**
 Shell : Brass
 Insulator : PA Series
 A PIN : Beryllium Copper
 B PIN : Brass
- 2. Finish**
 Shell : Gold plated.
 A PIN : Gold plated with nickel under plated.
 B PIN : Gold plated with nickel under plated.
- 3. Electrical Specifications :**
 Operation Temperature : -30°C to +85°C
 Electric Power : 2W
 Frequency Range : DC ~ 2,000MHz
 Impedance : 50 Ω
 Insulation Resistance : over 1000MΩ (Measured at DC 100V)
 Contact Resistance : Center 65mΩ or less, Outer 40mΩ or less
 VSWR : Normal Close - under 1.4, Normal open – under 1.4
 Insertion Loss : 0.30dB or less
 Isolation : 17dB or more
- 4. Mechanical Specifications:**
 Durability : 2,000 cycles
- 5. Parts to be packaged in tape and reel for automatic placement. All packaging materials to be approved by Amphenol engineering.**



VIEW A



Recommended Board Dimensions Diagram